

EDITOR'S CHOICE

EUROFAST CONNECTOR | MICROMAX >>

t 1300362626 | e micromax@micromax.com.au
| w www.micromax.com.au

TURCK Incorporated has released its 8-pin M12 eurofast connector designed specifically for use with 'Kübler by TURCK' incremental encoders. Kübler by TURCK encoders are used in strenuous factory applications such as material handling, conveyor systems, process control and web control.

The E-WKC 8T-PX3-930 provides quick and easy connectivity in demanding environments. Its cordset has three LEDs, housed in a translucent moulded right-angle connector for indication of channels A, B and Z. Green LEDs indicate channels A and B, while amber is used for the index channel.

The LEDs can also be used during machine set-up for home position indication and provide operational status of the encoder output channels. The cordset allows the use of 5-30Vdc and draws minimal current for proper operation.

The E-WKC 8T-PX3-930 cordset is manufactured with an extremely rugged PVC flexlife cable that can withstand over 2 million flex cycles.

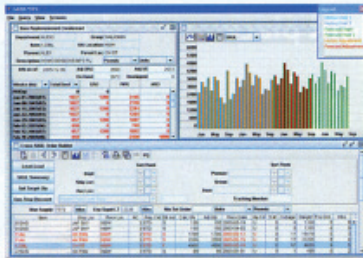
Cordsets are available with nickel-plated brass or stainless steel coupling nuts and provide protection that meets the following standards - UL, CSA, NEMA 1, 3, 4, 6P and IEC IP 68.



GAINS ERP APPLICATION | GRA

t 03 9421 4611 | e info@gra.net.au | w www.gra.net.au

Consulting firm GRA has announced the release of its GAINS' enterprise resource planning (ERP) integration application. The GAINS Integration Tool Kit is designed



to interface with major ERP systems such as those of Oracle Corp, Oracle's J.D. Edwards line of software and SAP. It can be deployed by clients using any industry-standard structures, such as Oracle, DB2 or SQL Server, to decrease the time and personnel needed to integrate GAINS. There is no need for additional data conversion interfaces to be developed.

GAINS is a 'best-of-breed' demand, inventory and supply chain planning and optimisation system. GAINS' unique planning capabilities enable businesses to optimally balance the 4 C's - Capital, Costs, Capacity and Customer service levels. GAINS enables management by exception and provides powerful, fact based decision support at the strategic, tactical and operational levels. GAINS is a time-tested supply chain management solution with the proven ability to rapidly deliver results and create additional value within the supply chain.

Roto Lift | TEAM SYSTEMS

t 03 9799 9411 | e sales@teamsystems.net.au
| w www.teamsystems.net.au

The Australian designed and engineered Roto Lift is an invention that makes the manual loading and unloading of pallets safer, faster and easier. The unit is designed to keep the active layer of the load at or above waist height. Its patented multi spring design eliminates bending and lifting, and is highly effective at reducing the risk of back strain and back injury - the most common of all work injuries. The solid work platform rotates for easy palletizing and comes in both 1 tonne and 2 tonne models. The table also incorporates 2 way and 4 way entry to enable easy re-location by either fork or pallet jack. An optional mobile base is also available. All springs are the same rating for simple operation and can be quickly added or removed without the need for specialised tools or the use of a forklift. Options also include fully galvanized, low profile, powder coating and stainless steel. The Roto lift is available in 1,000 kilo or 2,500 kilo capacity. Base Dimensions = 1150 mmL x 880 mm. Table Dimensions = 1100 mm Diameter. Table Travel = 810 mm extended, 360 mm collapsed. Table Bearings 10 x 2. Table construction = Solid sheet, fully enclosed. Table Pivot Points = Bronze Finish.

